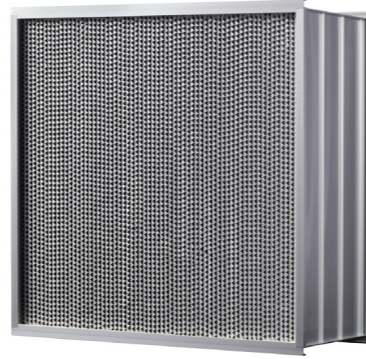


M-HI HIGH-EFFICIENCY HEPA FILTER WITH SEPARATOR



PRODUCT FEATURES

- Corrugated aluminium. Frame available in non-flanged, single-flanged, or double-flanged configurations, with a 20 mm flange depth
- Ultra-fine glass fiber media
- Separator design ensures high efficiency, low pressure drop, and high dust holding capacity
- Suitable for variable air volume (VAV) systems

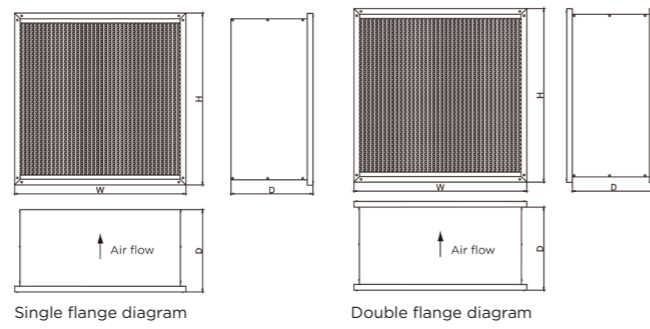
APPLICATIONS

- High efficiency filtration for cleanroom HVAC systems as well as commercial and industrial applications
- Suitable for HVAC systems in high-humidity environments
- Suitable for variable air volume (VAV) HVAC systems
- Ideal for HVAC systems with limited installation space
- Suitable for HVAC systems with high fire safety requirements or elevated operating temperatures
- Widely used in cleanrooms and other environments with stringent air cleanliness requirements

EFFICIENCY

- 99.95%@MPPS(H13), 99.995%@MPPS(H14)

PRODUCT STRUCTURE DESCRIPTION



List of Materials	
Frame	Galvanized steel sheet / Aluminium / Stainless steel sheet / Aluminium profiles
Filter Depth	80mm / 150mm / 220mm / 292mm
Filter Material	Water-resistant fiberglass
Separator	Corrugated aluminium / Paper
Sealant	Polyurethane

Note: Faceguard available (Material: Powder-coated steel faceguard)

Applicable Conditions	
Maximum Temperature	80°C (180°F)

NAME SPECIFICATION

HI - 01 - □□□ - □□□ - □□ - E□ - □□ - □ - □

- 1 Separator types: Unmarked: Corrugated aluminium Z: Paper, SS: Stainless steel
- 2 Airflow types: N-Standard airflow, H-High airflow
- 3 Flange types: X-No flange, D1-Single flange, D2-Double flange
- 4 Air-tight gasket: E0-None, E1-Upstream, E2-Both sides, E3-Downstream
- 5 Frame material: SS (SUS304)-Stainless steel sheet, SG-Galvanized steel sheet, AL-Aluminium, A-Aluminium
- 6 Dimensions: Width x Height x Depth (WxHxD), unit: mm
- 7 Efficiency: H13, H14
- 8 Manufacturer: MayAir
- 9 Type: High efficiency HEPA filter with separator

M-HI Product Specifications: Standard Airflow								
Nominal Dimensions W x H x D (Inch)	Actual Dimensions W x H x D (mm)	Separator	Flange	Airflow (m³/h)	Face Velocity (m/s)	Rated Initial Pressure Drop (Pa)		Recommended Final Pressure Drop (Pa)
						H13	H14	
12 x 24 x 3	305 x 610 x 80	Aluminium	None	200	0.36	249	280	Initial pressure drop 2 to 2.5 times
24 x 24 x 3	610 x 610 x 80			420	0.36	249	280	
12 x 24 x 6	305 x 610 x 150			420	0.77	249	280	
24 x 24 x 6	610 x 610 x 150			900	0.77	249	280	
12 x 24 x 9	305 x 610 x 220			650	1.20	249	280	
24 x 24 x 9	610 x 610 x 220			1,400	1.20	249	280	
12 x 24 x 12	305 x 610 x 292			860	1.60	249	280	
24 x 24 x 12	610 x 610 x 292			1,860	1.60	249	280	

Remark:
1. Initial pressure drop performance tolerance is ±10%.
2. Special dimensions available upon request.

M-HI Product Specifications: High Airflow								
Nominal Dimensions W x H x D (Inch)	Actual Dimensions W x H x D (mm)	Separator	Flange	Airflow (m³/h)	Face Velocity (m/s)	Rated Initial Pressure Drop (Pa)		Recommended Final Pressure Drop (Pa)
						H13	H14	
12 x 24 x 3	305 x 610 x 80	Aluminium	None	400	0.60	249	280	Initial pressure drop 2 to 2.5 times
24 x 24 x 3	610 x 610 x 80			800	0.60	249	280	
12 x 24 x 6	305 x 610 x 150			550	1.00	249	280	
24 x 24 x 6	610 x 610 x 150			1,170	1.00	249	280	
12 x 24 x 9	305 x 610 x 220			850	1.55	249	280	
24 x 24 x 9	610 x 610 x 220			1,820	1.55	249	280	
12 x 24 x 12	305 x 610 x 292			1,120	2.00	249	280	
24 x 24 x 12	610 x 610 x 292			2,400	2.00	249	280	

Remark:
1. Initial pressure drop performance tolerance is ±10%.
2. Special dimensions available upon request.